

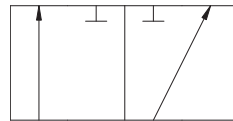
# AB3 Series / Three-Way Round Body Threaded



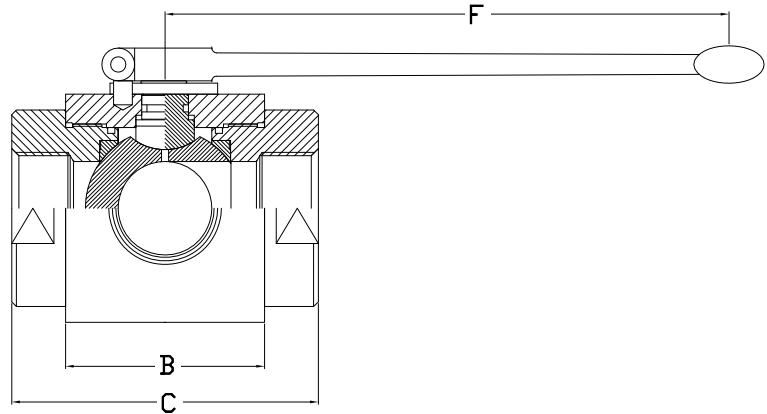
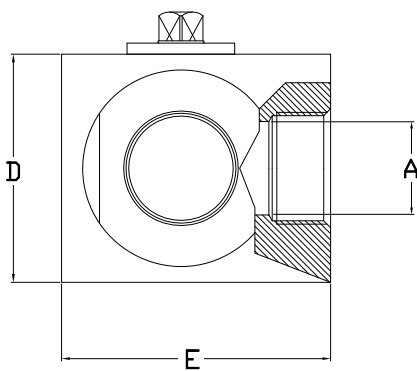
- Carbon steel construction with Silver Trivalent plating
- POM seats & Buna O-rings standard on carbon steel valves
- Optional seal materials available for extreme temperature applications & fluid compatibility (*Consult Factory*)



L Port



L Port



Standard handle supplied is C81302B. Refer to page 47 for details.

AB3 SERIES FULL BORE									
NPT	SAE	PSI MAX	A BORE	B	C	D	E	F	WEIGHT
AB3 L N1-1/4	AB3 L S#20	5075	1.26	2.96	4.53	3.66	3.90	11.81	11.7 LBS
AB3 L N1-1/2	AB3 L S#24	5075	1.57	3.35	5.16	4.21	4.53	11.81	16.1 LBS
AB3 L N2	AB3 L S#32	5075	1.89	3.86	5.51	4.49	5.04	11.81	20.2 LBS

Only pressurize center port. Side ports should not be pressurized or be exposed to backpressure that is greater than the inlet pressure. Failure to follow these guidelines will result in internal leakage through the valve.

*NPT threads in accordance with ANSI B.1.20.1 specifications.*

*SAE threads in accordance with SAE J1926/1 specifications.*



# AB3 Series / Three-Way Round Body Threaded

## Model Code Breakdown

AB3L N1 1/2 - 1 1 D B \_

### Valve Series •

### Port Type •

L	"Diverter" L-Port
---	-------------------

### Connection Type/Size •

N	NPT Pipe Thread
S	SAE Straight Thread

### Body & Adapter Material •

1	Carbon Steel
2	316 Stainless Steel

### Ball & Stem Material •

1	Carbon Steel
2	316 Stainless Steel

### • Locking Kit or Optional Handle Code (See pages 46 & 47)

### • Adapter & Stem Seals

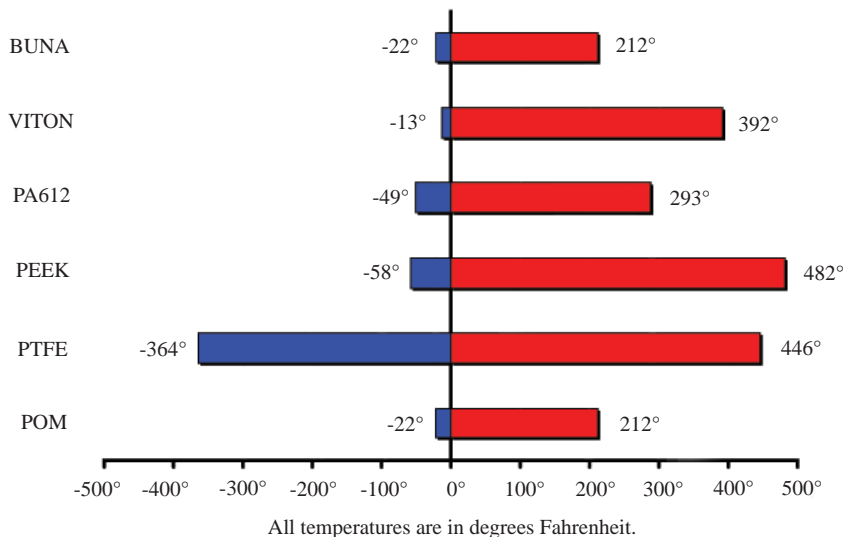
B	Buna- Standard
V	Viton (Std on S/S)

### • Ball & Stem Seats

D	POM- Standard
P	PEEK
N	PA612
X	PTFE w/metallic insert

- Please consult your system's seal manufacturer for recommendation of seal selection, as Anchor Fluid Power does not accept responsibility for seal selection.

## MAXIMUM & MINIMUM WORKING TEMPERATURES FOR SEAL MATERIALS



FLOW, NEEDLE & CHECK VALVES

HYDRAULIC BALL VALVES

WELD COUPLINGS

FLANGES