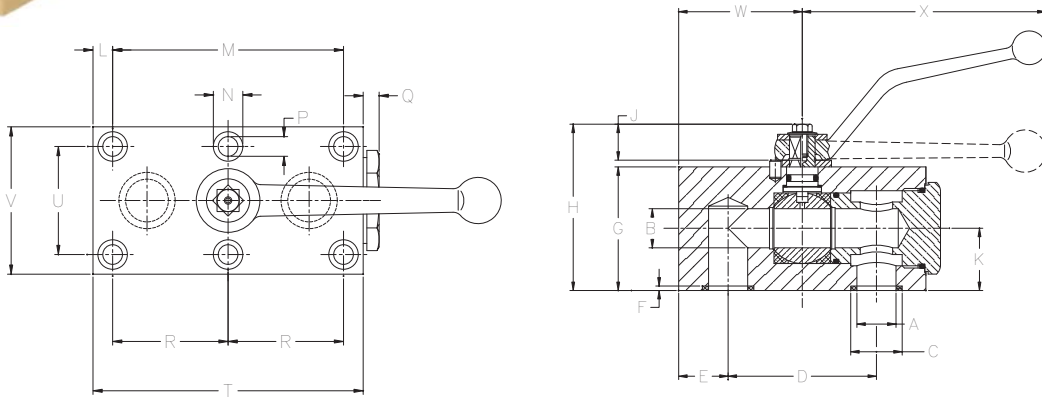


APK Series / Two-Way Manifold Mount



- Carbon steel construction with Zinc Dichromate plating
- POM seats & Buna O-rings standard on carbon steel valves
- Optional seal materials available for extreme temperature applications & fluid compatibility (Consult Factory)



Standard handles supplied are:
Refer to page 47 for details.

- | | |
|-----------|---------|
| #4 - #8 | C1010ZB |
| #12 - #16 | C1200ZB |
| #20 - #24 | C92501Z |

APK SERIES											
SERIES	PSI MAX	A	B	C	D	E	F	G	H	J	K
APK2 #4	7250	.24	.24	.464	1.377	.37	.074	1.38	1.89	.43	.75
APK2 #6	7250	.39	.39	.586	1.734	.39	.074	1.77	2.36	.43	.94
APK2 #8	5800	.51	.51	.980	2.283	.71	.074	2.17	2.76	.43	1.34
APK2 #12	5075	.79	.79	1.141	2.716	.83	.078	2.76	3.46	.51	1.50
APK2 #16	5075	.98	.98	1.374	3.188	.94	.090	3.15	3.86	.51	1.80
APK2 #20	5075	1.26	1.26	1.574	3.779	1.10	.078	3.94	4.84	.51	2.17
APK2 #24	5075	1.46	1.57	1.877	4.409	1.14	.090	4.33	5.24	.51	2.28

APK SERIES (CONT'D)											
SERIES	L	M	N	P	Q	R	T	U	V	W	X
APK2 #4	.354	1.377	.413	.255	.28	*N/A	2.28	1.062	1.57	1.06	4.31
APK2 #6	.295	2.165	.531	.334	.39	*N/A	2.76	1.574	2.17	1.14	4.31
APK2 #8	.374	3.267	.531	.334	.39	1.633	3.94	1.771	2.36	1.69	4.31
APK2 #12	.452	3.818	.649	.413	.39	1.909	4.65	2.007	2.76	2.05	7.00
APK2 #16	.354	4.527	.649	.413	.47	2.263	5.31	2.362	3.15	2.44	7.00
APK2 #20	.433	5.354	.748	.511	.59	2.677	6.50	3.070	3.94	2.95	11.81
APK2 #24	1.141	4.409	.984	.649	.67	2.204	7.28	3.740	5.12	3.39	11.81

*Valve sizes #4 & #6 only have (4) mounting holes.

FLOW, NEEDLE & CHECK VALVES

HYDRAULIC BALL VALVES

WELD COUPLINGS

FLANGES



APK Series / Two-Way Manifold Mount

Model Code Breakdown

APK2 #20 - 1 1 D B _

Valve Series •

APK2	Manifold Mount 2-way
------	----------------------

Connection Size •

Body & Adapter Material •

1	Carbon Steel
2	316 Stainless Steel

Ball & Stem Material •

1	Carbon Steel
2	316 Stainless Steel

• **Locking Kit or Optional Handle Code**
(See pages 46 & 47)

• Adapter & Stem Seals

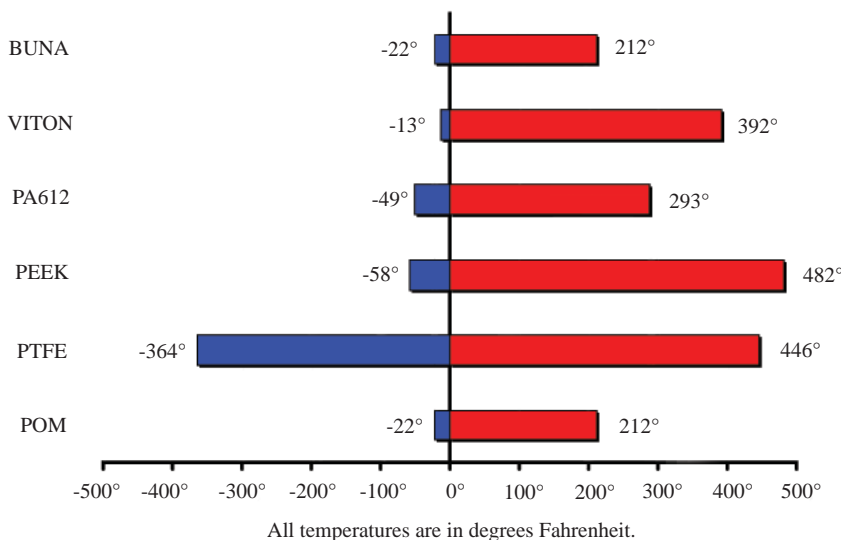
B	Buna- Standard
V	Viton (Std on S/S)

• Ball & Stem Seats

D	POM- Standard
P	PEEK
N	PA612
X	PTFE w/metallic insert

- Please consult your system's seal manufacturer for recommendation of seal selection, as Anchor Fluid Power does not accept responsibility for seal selection.

MAXIMUM & MINIMUM WORKING TEMPERATURES FOR SEAL MATERIALS



FLOW, NEEDLE & CHECK VALVES

HYDRAULIC BALL VALVES

WELD COUPLINGS

FLANGES