

AB2 Series / Two Way Round Body Threaded



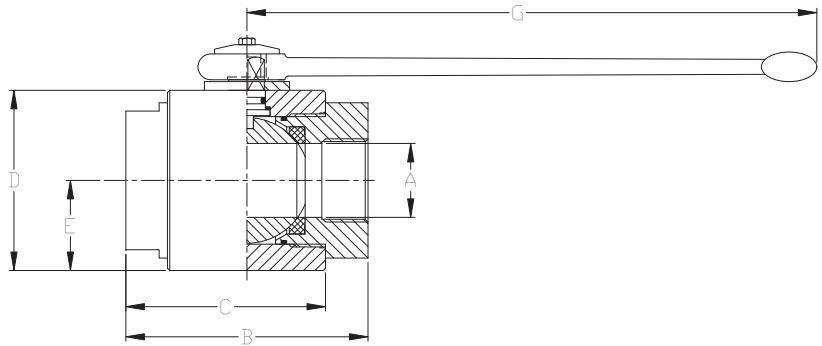
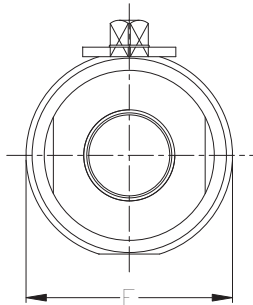
- Carbon steel construction with Silver Trivalent plating
- 316 stainless steel available from stock
- Unrestricted bore available through 2" size
- POM seats & Buna O-rings standard on carbon steel valves
- Optional seal materials available for extreme temperature applications & fluid compatibility (Consult Factory)

FLOW, NEEDLE & CHECK VALVES

HYDRAULIC BALL VALVES

WELD COUPLINGS

FLANGES



Standard handle supplied is C81302B. Refer to page 47 for details.

AB2 SERIES FULL BORE										
NPT	SAE	PSI MAX	A BORE	B	C	D	E	F	G	WEIGHT
AB2 N1-1/4	AB2 S#20	5075	1.26	4.53	3.74	3.66	1.83	3.88	11.69	8.3 LBS
AB2 N1-1/2	AB2 S#24	5075	1.57	5.16	4.25	4.21	2.11	4.45	11.69	12.5 LBS
AB2 N2	AB2 S#32	5075	1.97	5.51	4.53	4.49	2.24	4.84	11.69	14.6 LBS

AB2 SERIES REDUCED BORE										
NPT	SAE	PSI MAX	A BORE	B	C	D	E	F	G	WEIGHT
AB2N2R	N/A	5075	1.57	5.16	4.25	3.86	1.89	4.02	11.69	13.5 LBS

NPT threads in accordance with ANSI B.1.20.1 specifications.
SAE threads in accordance with SAE J1926/1 specifications.



AB2 Series / Two Way Round Body Threaded

Model Code Breakdown

AB2 N1/2 _ - 1 1 D B _

Valve Series •

Connection Type/Size •

N	NPT Pipe Thread
S	SAE Straight Thread
B	BSPP Thread

Bore Restriction •

blank	Unrestricted Bore
R	Restricted Bore

Body & Adapter Material •

1	Carbon Steel
2	316 Stainless Steel

Ball & Stem Material •

1	Carbon Steel
2	316 Stainless Steel

• **Locking Kit or Optional Handle Code**
(See pages 42 & 43)

• **Adapter & Stem Seals**

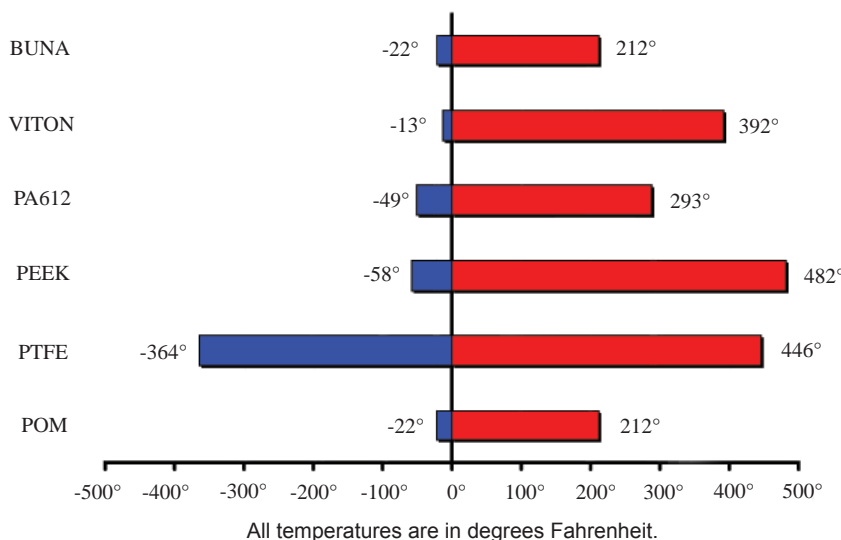
B	Buna- Standard
V	Viton (Std on S/S)

• **Ball & Stem Seats**

D	POM- Standard
P	PEEK
N	PA612
X	PTFE w/metallic insert

- Please consult your system's seal manufacturer for recommendation of seal selection, as Anchor Fluid Power does not accept responsibility for seal selection.

MAXIMUM & MINIMUM WORKING TEMPERATURES FOR SEAL MATERIALS



FLOW, NEEDLE & CHECK VALVES

HYDRAULIC BALL VALVES

WELD COUPLINGS

FLANGES