

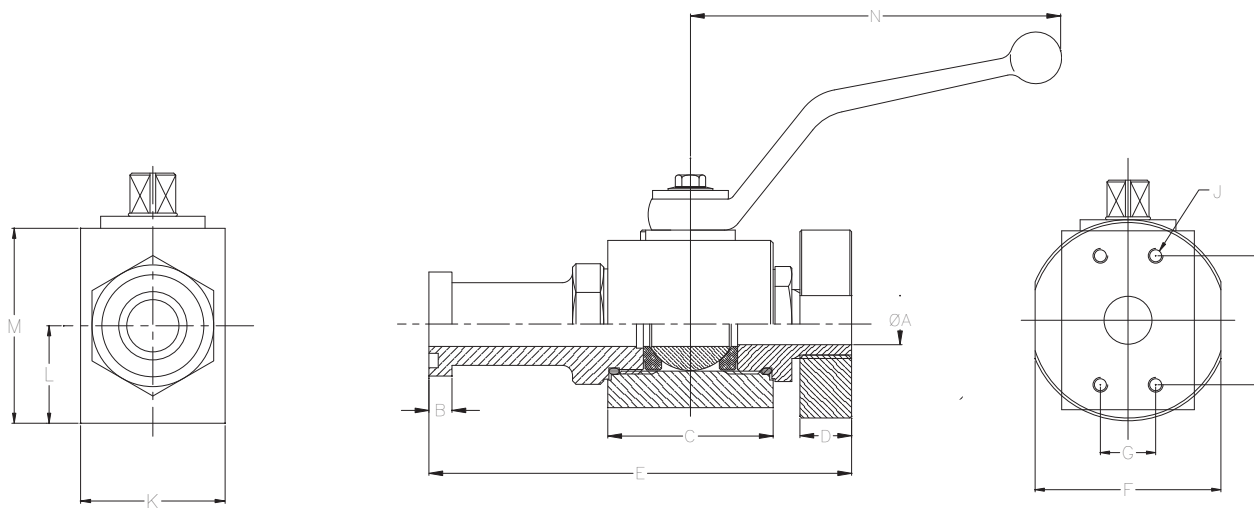
AES/F & ABS/F Series / Flange Head X Flat-Face



- Flange Head X Flat-Face connections for insertion in between existing flange joints.
- Ideal for flange mounting anywhere a flange connection exists or where hoses are already connected.
- Carbon steel construction with Silver Trivalent plating
- 316 stainless steel available
- POM seats & Buna O-rings standard on carbon steel valves
- Optional seal materials available for extreme temperature applications & fluid compatibility (Consult Factory)

FLOW, NEEDLE & CHECK VALVES

HYDRAULIC BALL VALVES



Standard handles supplied are:

- #8
- #12 - #16
- #20 - #32

- C1010ZB
- C1200ZB
- C92501Z-SW17

Refer to page 47 for details.

WELD COUPLINGS

FLANGES

| AES/F SERIES | | | | | | | | | | | | | | |
|--------------|---------|--------|-----|------|------|-----|------|------|------|---------|------|------|------|------|
| SERIES | PSI MAX | A BORE | B | C | D | E | F | G | H | J | K | L | M | N |
| AES/F3#8 | 5000 | .51 | .27 | 1.89 | .87 | 5.3 | 1.89 | .69 | 1.50 | 5/16-18 | 1.46 | .71 | 1.89 | 4.31 |
| AES/F6#8 | 6000 | .51 | .31 | 1.89 | .87 | 5.3 | 1.89 | .72 | 1.59 | 5/16-18 | 1.46 | .71 | 1.89 | 4.31 |
| AES/F3#12 | 5000 | .75 | .27 | 2.44 | .91 | 5.8 | 2.36 | .87 | 1.87 | 3/8-16 | 1.77 | .91 | 2.36 | 7.00 |
| AES/F6#12 | 6000 | .79 | .35 | 2.44 | .91 | 6.1 | 2.36 | .94 | 2.00 | 3/8-16 | 1.77 | .91 | 2.36 | 7.00 |
| AES/F3#16 | 5000 | .98 | .32 | 2.60 | 1.06 | 6.4 | 2.76 | 1.03 | 2.06 | 3/8-16 | 2.17 | 1.14 | 2.76 | 7.00 |
| AES/F6#16 | 5000 | .98 | .38 | 2.60 | 1.06 | 6.8 | 2.76 | 1.09 | 2.25 | 7/16-14 | 2.17 | 1.14 | 2.76 | 7.00 |

| ABS/F SERIES | | | | | | | | | | | | | | |
|--------------|---------|--------|-----|------|------|-----|------|------|------|---------|------|------|------|-------|
| SERIES | PSI MAX | A BORE | B | C | D | E | F | G | H | J | K | L | M | N |
| ABS/F3#20 | 4000 | 1.26 | .32 | 2.96 | 1.26 | 7.2 | 3.07 | 1.19 | 2.31 | 7/16-14 | 3.46 | 1.65 | 3.25 | 12.31 |
| ABS/F6#20 | 5000 | 1.26 | .41 | 2.96 | 1.26 | 7.8 | 3.07 | 1.25 | 2.63 | 1/2-13 | 3.46 | 1.65 | 3.25 | 12.31 |
| ABS/F3#24 | 3000 | 1.50 | .32 | 3.36 | 1.26 | 8.0 | 3.78 | 1.41 | 2.75 | 1/2-13 | 4.02 | 1.89 | 3.86 | 12.31 |
| ABS/F6#24 | 5000 | 1.50 | .50 | 3.36 | 1.26 | 9.0 | 3.78 | 1.44 | 3.13 | 5/8-11 | 4.02 | 1.89 | 3.86 | 12.31 |
| ABS/F3#32 | 3000 | 1.89 | .38 | 3.54 | 1.34 | 8.4 | 4.72 | 1.69 | 3.06 | 1/2-13 | 4.29 | 2.03 | 4.06 | 12.31 |
| ABS/F6#32 | 5000 | 1.89 | .50 | 3.54 | 1.34 | 9.5 | 4.72 | 1.75 | 3.81 | 3/4-10 | 4.29 | 2.03 | 4.06 | 12.31 |



AES/F & ABS/F Series / Flange Head X Flat-Face

Model Code Breakdown

AES/F3 #8 - 1 1 D B _

Valve Series •

| | |
|--------|--------------------|
| AES/F3 | Code 61 Block Body |
| AES/F6 | Code 62 Block Body |
| ABS/F3 | Code 61 Round Body |
| ABS/F6 | Code 62 Round Body |

Connection Size •

Body & Adapter Material •

| | |
|---|---------------------|
| 1 | Carbon Steel |
| 2 | 316 Stainless Steel |

Ball & Stem Material •

| | |
|---|---------------------|
| 1 | Carbon Steel |
| 2 | 316 Stainless Steel |

Locking Kit or Optional Handle Code (See pages 42 & 43)

Adapter & Stem Seals

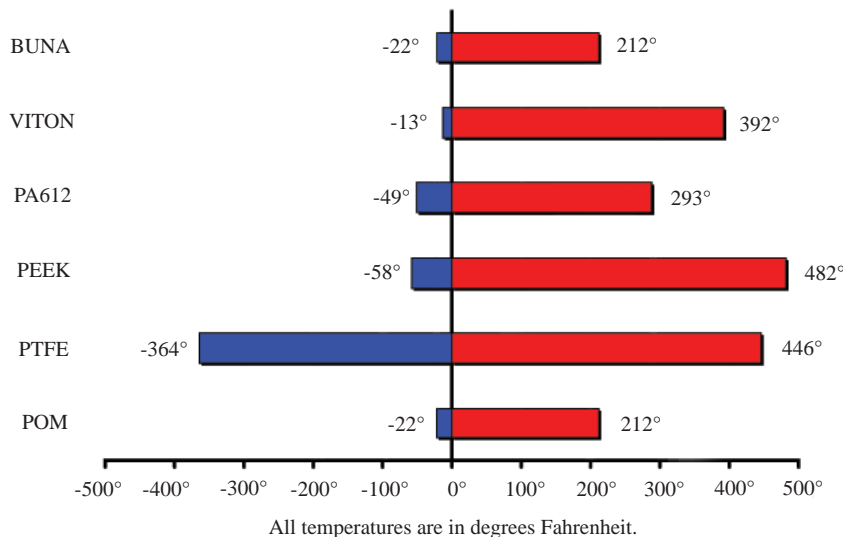
| | |
|---|--------------------|
| B | Buna- Standard |
| V | Viton (Std on S/S) |

Ball & Stem Seats

| | |
|---|------------------------|
| D | POM- Standard |
| P | PEEK |
| N | PA612 |
| X | PTFE w/metallic insert |

- Please consult your system's seal manufacturer for recommendation of seal selection, as Anchor Fluid Power does not accept responsibility for seal selection.

MAXIMUM & MINIMUM WORKING TEMPERATURES FOR SEAL MATERIALS



FLOW, NEEDLE & CHECK VALVES

HYDRAULIC BALL VALVES

WELD COUPLINGS

FLANGES